



Hard Chess Puzzle # 0108

By

G Bud Games
<https://gbud.in>

January 18, 2022

Contents

Hard Chess puzzle # 0108 - Gain opponent's queen in 3 moves	3
Hard chess puzzle 0108	3
Solution to hard chess puzzle 0108	4
Solution 1	4
Right moves for the solution to the hard chess puzzle 0108	7
Explanation for the moves	7
Categories of hard chess puzzle 0108	8
hard chess puzzle 0108 chart	8
How to view the solution to hard chess puzzle 0108	10
How to get help for moves in the hard chess puzzle 0108	11
Play chess for free	12

List of Figures

1	Solve this hard chess puzzle 0108. Gain opponent's queen in 3 moves @ https://gbud.in/gnl24r3	3
2	Solve this hard chess puzzle online with solution @ https://gbud.in/gnl24r3	3
3	Initial board position of hard chess puzzle 0108	4
4	Rd4+	5
5	Ke3	5
6	Rd8+	6
7	Kxe2	6
8	Rxg8	7
9	hard chess puzzle 108 chart 1	8
10	hard chess puzzle 108 chart 2	9
11	hard chess puzzle 108 chart 3	9
12	hard chess puzzle 108 chart 4	10
13	Click the solution button to view solutions @ https://gbud.in/gnl24r3	10
14	Click the help button to get help on next move @ https://gbud.in/gnl24r3	11
15	Solve more hard puzzles @ https://gbud.in/chshdpz	11
16	Solve other puzzles @ https://gbud.in/chsgppz	11
17	Play chess online for free. Solve puzzles and play with friends	12
18	Solve this puzzle online by scanning this QR code or go to the link below	13

Hard Chess puzzle # 0108 - Gain opponent's queen in 3 moves

Solve this hard chess puzzle and improve your chess games through improvement of your chess strategies and chess tactics. This hard puzzle is a subset of [kids games](#).

Puzzle No : 0108

Difficulty level : hard

Description : Gain opponent's queen in 3 moves

Next Move : White

Player level : Advanced

Short URL for puzzle : <https://gbud.in/gnl24r3>

Hard chess puzzle 0108

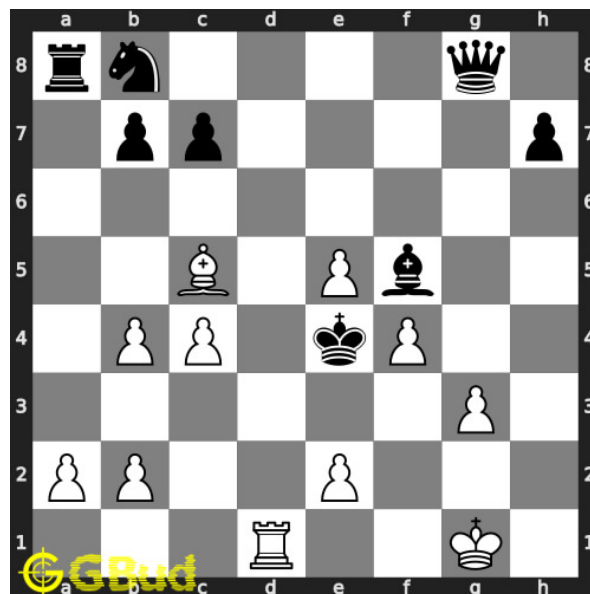


Figure 1: Solve this hard chess puzzle 0108. Gain opponent's queen in 3 moves @ <https://gbud.in/gnl24r3>



Figure 2: Solve this hard chess puzzle online with solution @ <https://gbud.in/gnl24r3>

Dont forget to check out [chess puzzles](#), [easy chess puzzles](#), [medium chess puzzles](#), [hard chess puzzles](#) and [chess puzzles collections](#) .

Solution to hard chess puzzle 0108

At this puzzle, next [move](#) is by [White](#). The objective of the puzzle is to gain opponent's queen in 3 moves.

See the interactive solution at the [puzzle page](#)

Solution 1

Initial board position This is the initial board position of hard chess puzzle 0108.

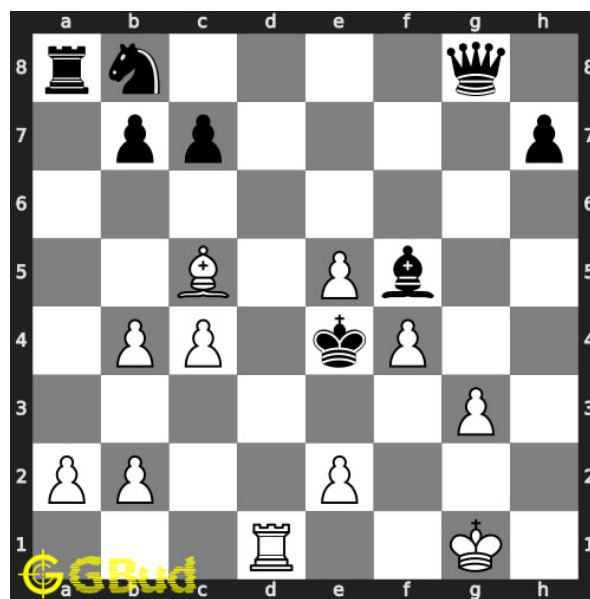


Figure 3: Initial board position of hard chess puzzle 0108

Move 1 Move by white

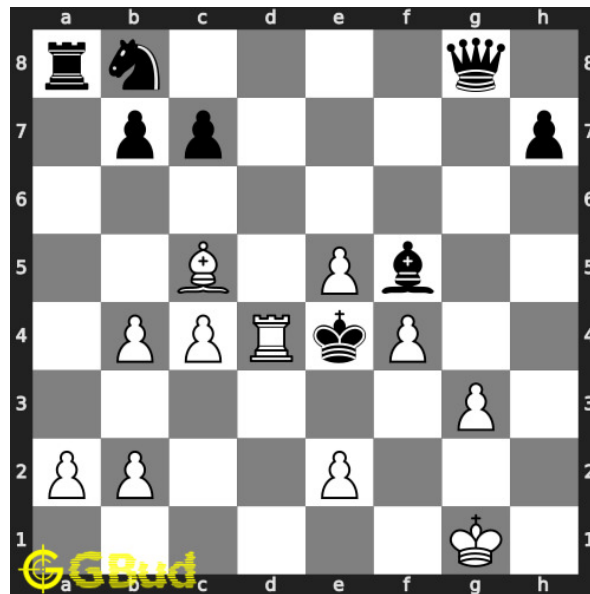


Figure 4: Rd4+

your **rook moves** to **d4** and gives **check** to opponent. this is to force the opponent's **king** to **move** to **e3**.

Move 2 Move by black

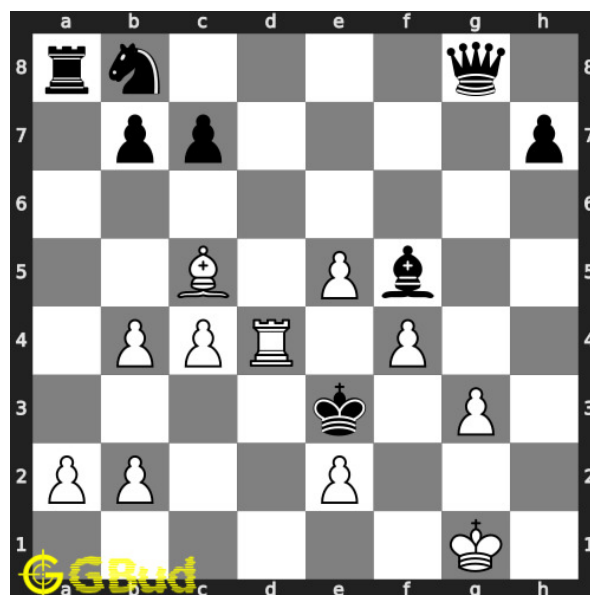


Figure 5: Ke3

this is a zugzwang **move** as this forces opponent's **king** to respond. oppo-
nent's **king moves** to **e3** as this is the only free **square** available.

Move 3 Move by white

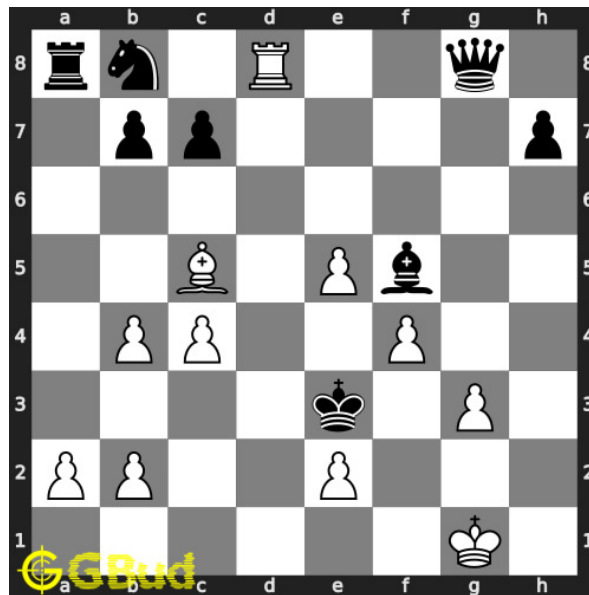


Figure 6: Rd8+

this is a discovered attack since the movement of **rook** results in **check** from the **bishop**.

Move 4 Move by black

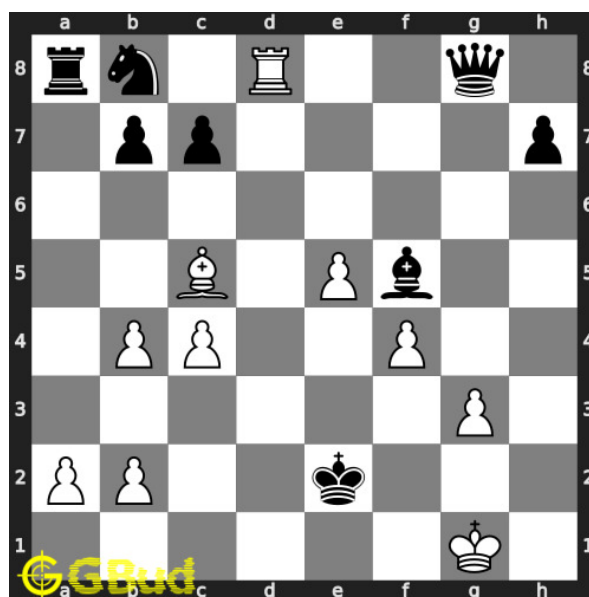


Figure 7: Kxe2

opponent's **king captures** your **pawn** at **e2**.

Move 5 Move by white

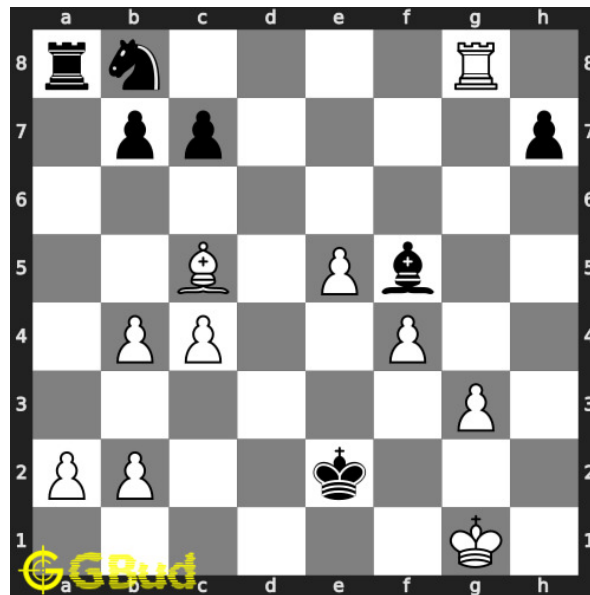


Figure 8: Rxc8

your **rook captures** opponents hanging **queen**.. this is how you can gain opponent's **queen** in 3 **moves**.

Right moves for the solution to the hard chess puzzle 0108

Based on the objective of the puzzle, you have to make the right moves. Following are the right moves

1. Rd4+, Rd8+, Rxc8

Explanation for the moves

1. Rd4+ - Your rook moves to d4 and gives check to opponent. This is to force the opponent's king to move to e3.
2. Ke3 - This is a zugzwang move as this forces opponent's king to respond. Opponent's king moves to e3 as this is the only free square available.
3. Rd8+ - This is a discovered attack since the movement of rook results in check from the bishop.
4. Kxe2 - Opponent's king captures your pawn at e2.
5. Rxc8 - Your rook captures opponents hanging queen.. This is how you can gain opponent's queen in 3 moves.

6. For right move - You have used the discovered attack effectively to gain the queen. It was a good decision
7. For wrong move - You could have gained the queen after a discovered attack. Try again

Categories of hard chess puzzle 0108

This hard chess puzzle falls in these categories.

1. [Hard chess puzzles](#)
2. [Gain puzzles in chess](#)
3. [Strategy puzzles in chess](#)
4. [Zugzwang puzzles in chess](#)
5. [Rook puzzles in chess](#)
6. [Bishop puzzles in chess](#)

hard chess puzzle 0108 chart



Figure 9: hard chess puzzle 108 chart 1



Figure 10: hard chess puzzle 108 chart 2



Figure 11: hard chess puzzle 108 chart 3



Figure 12: hard chess puzzle 108 chart 4

How to view the solution to hard chess puzzle 0108

To view the [solution to this puzzle](#), follow the steps given below

1. Go to the [puzzle page](#)
2. Click the solution button (Key as shown [below](#)) to view the solution



Figure 13: Click the solution button to view solutions @ <https://gbud.in/gnl24r3>

How to get help for moves in the hard chess puzzle 0108

To get help or the possible next moves in the puzzle, , follow the steps given below

1. Go to the [puzzle page](#)
2. Click the help button (exclamation mark as shown [below](#)) to get help or suggestion on next possible [move](#)



Figure 14: Click the help button to get help on next move @ <https://gbud.in/gnl24r3>



Figure 15: Solve more hard puzzles @ <https://gbud.in/chshdpz>



Figure 16: Solve other puzzles @ <https://gbud.in/chsgppz>

Play chess for free

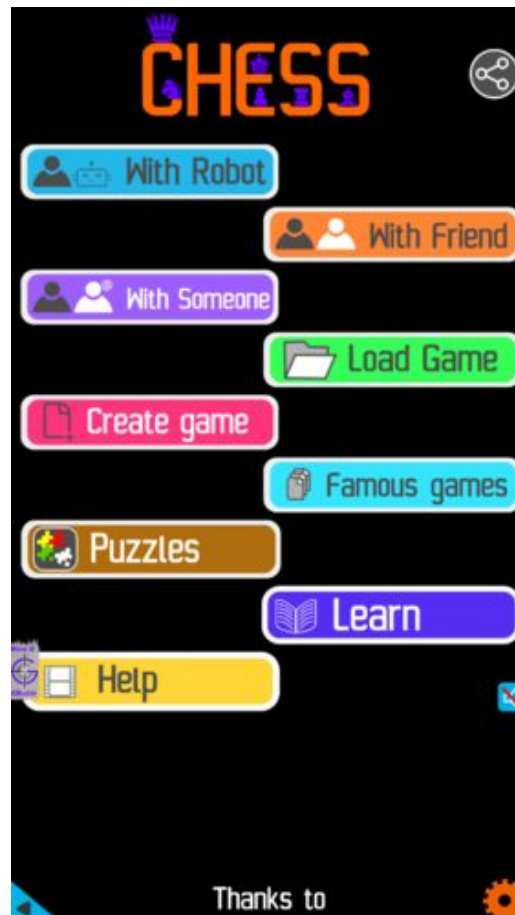


Figure 17: Play chess online for free. Solve puzzles and play with friends

Play chess for free at <https://gbud.in/chs>

We present you a platform to play chess online with friends for free. No need to install any app. You can play chess for free without registration or login.

Simple. You can do several chess related activities.

1. solve chess puzzles
2. learn about chess
3. play chess with computer
4. play chess with friend
5. create your own chess games

6. [fen viewer](#)
7. [fen editor](#)
8. [fen generator](#)
9. [pgn viewer](#)
10. [chess board editor](#)
11. [view famous chess games.](#)



Figure 18: Solve this puzzle online by scanning this QR code or go to the link below

<https://gbud.in/gnl24r3>

Read the latest article on Hard Chess puzzle # 0108 - Gain opponent's queen in 3 moves by scanning this QR code or click the link

Previous article : « [Hard Chess puzzle # 0107 - Mate in 3 moves](#)

Next article : [Hard Chess puzzle # 0109 - Mate in 2 moves](#) »

[Back to top](#)

[Contact Us](#)